

KARIBAN

REFERENCE : K991

SIZES : XS_S_M_L_XL_XXL_3XL

COMPOSITION :

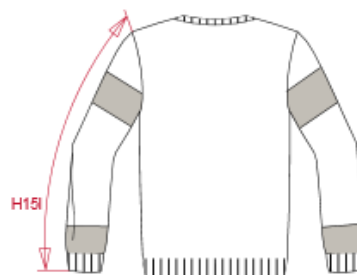
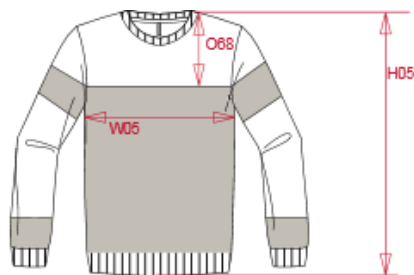
Main fabric : Knit Acrylic / Wool yarn 85/15 - 390 Base color
85%acrylic / 15%wool

WEIGHT :

Main fabric : 390 gsm- 14 lbs

ARTICLE WEIGHT :

584 gr/pc



DESCRIPTION
Français : Pullover motif rugby
English : Rugby design jumper
Nederlands : Pullover met rugbymotief
Deutsch : Pullover mit Rugbymotiv
Español : Jersey diseño rugby
Italiano : Maglione con motivo "Rugby"
Português : Camisola motivo rãguebi

COLORS	PANTONE SERIGRAPHIE
Off White	7527C

MEASUREMENT							
Description	XS	S	M	L	XL	2XL	3XL
H05 (M) Hauteur totale / Total height	66	68	70	72	74	76	78
W05 (M) 1/2 largeur poitrine à 1.5cm de l'emmanchure / 1/2 chest width at 1.5cm below armhole	47	50	53	56	59	62	65
H15I (M) Longueur manche avec bord côte / Sleeve length with rib	61	63	65	67	69	71	73
O68 Position artwork de HPS / Artwork position from HPS	20	20,50	21	21,50	22	22,50	23

CARE LABEL				

PACKING	
Box	12 pcs / box XS => L:60cm W:40cm H:24cm GW:7.50kg NW:5.50kg S => L:60cm W:40cm H:24cm GW:7.70kg NW:5.70kg M => L:60cm W:40cm H:24cm GW:8.25kg NW:6.25kg L => L:60cm W:40cm H:26cm GW:8.60kg NW:6.60kg XL => L:60cm W:40cm H:26cm GW:8.70kg NW:6.70kg XXL => L:60cm W:40cm H:26cm GW:9.20kg NW:7.20kg 3XL => L:60cm W:40cm H:26cm GW:9.70kg NW:7.70kg